

Case study

Solidatus for **policy compliance and management**

Ortecha used Solidatus' advanced modeling and analytics capabilities to solve the client's policy management challenge by mapping DCAM®, an industry standard framework, into the organization's data fabric.

“ *The multi-layered Solidatus Knowledge Model produced a visual display of compliance gaps for the development and tracking of the required two-year compliance roadmap.*

Solution

Ortecha, as an EDM Council® DCAM authorized partner, supported the bank by executing a global data management capability assessment using the EDM Council's Data Management Capability Assessment Model (DCAM). A small pilot assessment of the Americas' operation was executed in 1Q20 to establish baseline capability scores aligned to DCAM by business unit, all modeled using the Solidatus Knowledge Modeling tool. The knowledge model visualized the capability gaps, with a gap uplift plan embedded in the model.

Challenge

The CDO Data Governance team of a US-based Global Systemically Important Bank (G-Sib) released a data policy update with a two-year, three-step compliance schedule.

They needed to align the policy to a defined set of data management capabilities to establish a roadmap for executing against the phased policy compliance.

They also required a formal evidence-based mechanism to monitor policy compliance across the Enterprise and Business Unit operating levels that would support internal and external audit review with a focus on BCBS 239 compliance.

Key benefits

- **Clear and concise** business unit level data policy compliance roadmaps support the ability to measure progress over the two-year cycle.
- **The first line of defence** evidence-based compliance measurement establishes an audit-ready data management function.
- **Tangible process** to set and deliver against regulatory expectations all aligned to building sustainable data management capabilities to drive value from their data across the organization.
- **Transparent and measurable** compliance current-state and roadmap to inform the conversation with internal or external auditors.

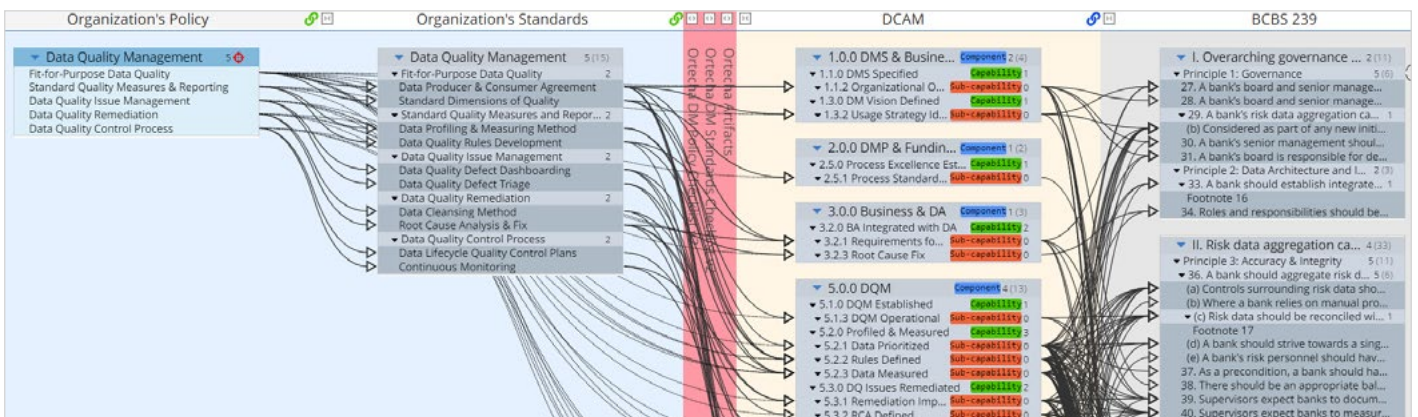


To prepare for the full global assessment of 10 business units and approximately 80 sub-units, the knowledge model was expanded to include mapping the bank's Data Management Policy and Standards. Additionally, the EDM Council industry-standard mapping of BCBS 239 to DCAM was included in the model. By adding both of these mappings to DCAM, the relationships between the Policy and Standards and the BCBS 239 Principles were linked to the Data Management Sub-Capabilities required for compliance.

As further evidence of compliance, the global assessment included the business unit collection of artifacts to justify the assessment score. Ortecha provided a challenge review that ensured the artifact evidenced the scores returned by the business unit.

Result

The multi-layered Solidatus knowledge model produced a visual display of compliance gaps for the development and tracking of the required two-year compliance roadmap.

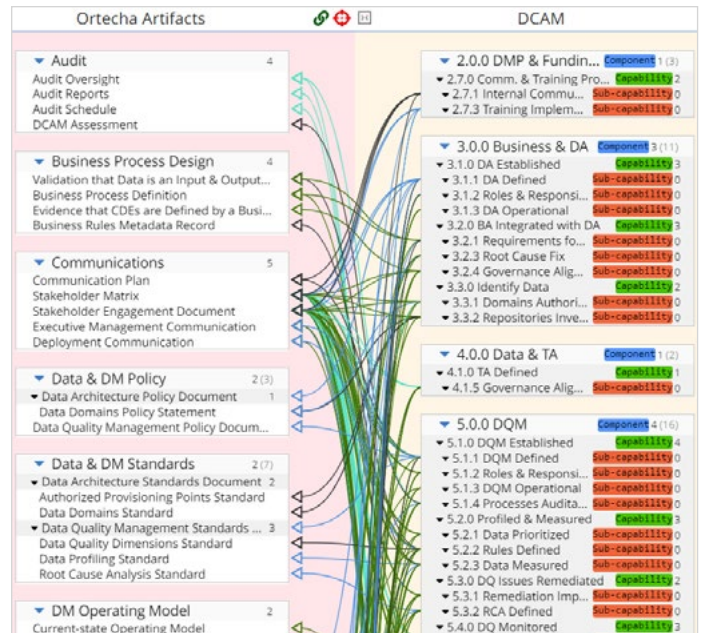


Solidatus for policy compliance and management

Typically, organizations address custom challenges such as policy management gap analysis using the expert analyst's tool of opportunity, Excel.

Solidatus provides a simple, intuitive alternative to Excel that leverages data management best practices, as specified within the EDM Council's DCAM framework.

Solidatus delivers a collaborative, sustainable, versioned, multi-dimensional modeling environment for expert analysts like Ortecha to create re-usable digital assets to solve their clients' data and policy management challenges.



Solidatus partners



Ortecha is a consultancy dedicated to helping companies manage their data, with offices in the UK and USA. As a leading EDM Council DCAM Authorized Partner and a Solidatus premium partner, they help organizations gain control of their data landscape, reducing costs, improving efficiency, and ultimately realizing more value from their data. Learn more at [ortecha.com](https://www.ortecha.com).



The EDM Council is the global non-profit association established by professionals to elevate the practice of data management as a business and operational priority. The Council is the leading advocate for data standards, best practices and comprehensive training and certification programs for its 200+ global member firms. Learn more at [edmcouncil.org](https://www.edmcouncil.org).

About Solidatus

Solidatus is an innovative data management technology company, empowering organizations to unlock the true business value behind their data. Our lineage-first technology enables organizations to connect and visualize data relationships across the enterprise, simplifying how they identify, access and understand them. Launched in 2017, Solidatus is the chosen data management tool for both the regulators and the regulated. Its clients and investors include top-tier global financial services brands such as Citi and HSBC, healthcare and retail organizations as well as government institutions. Solidatus has offices in the United Kingdom, the United States and Singapore. For more information, visit www.solidatus.com

21.09-000011-3

Discover – Visualize – Act