

# About Ortecha

the Data & Analytics enablers





# About Ortecha

We are dedicated to helping companies manage their data



We **focus exclusively on Data and Analytics** and love constantly honing our knowledge and expertise in this fast-moving subject.



We **work collaboratively with our clients**, so that we can share our expertise and help them get to the point where they no longer need us.



We are **practitioners** rather than management consultants and enjoy turning advice into practical improvements.



We have a **blend of data expertise** spanning the technological, organisational and cultural aspects of data. We're not just techy nerds!

## EDM Council Authorized Partner

- The EDM Council is a Global Association created to elevate the practice of Data Management as a business and operational priority.
- The Council publishes two of the top data management industry standard frameworks: Data Management Capability Assessment Model (DCAM®) & Cloud Data Management Capability (CDMC™).
- We are among the top 3 DCAM and CDMC Authorized Partners worldwide.
- We are active in the continued development of both frameworks and the formalization of industry best practices applying the frameworks.
- Our team is experienced at leading assessments, delivering training and customizing best practice to work for our clients.

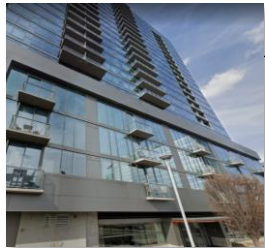




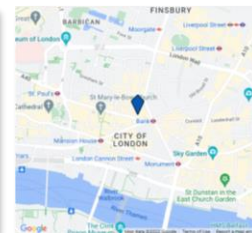
# Where we operate

We work from the UK and US with organisations across the globe

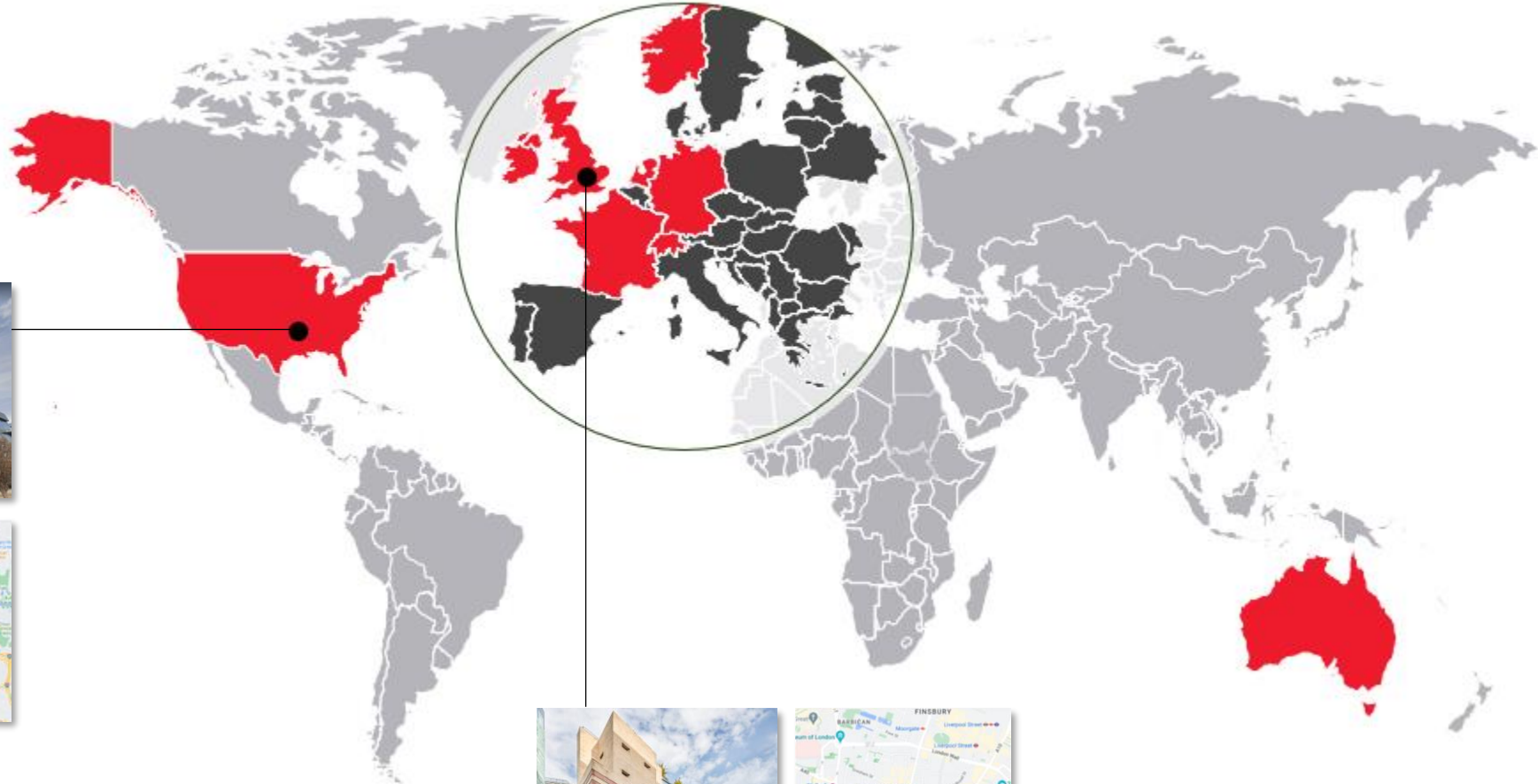
Nashville, USA



Client locations



City of London, UK





# Our clients

We've helped organisations at varying levels of data maturity overcome their toughest challenges



Just starting out and not sure what to tackle first



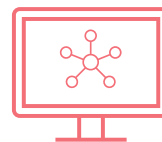
Some capabilities but have fallen into bad habits



Good foundations and want to take the next step



Overwhelmed by too much documentation



Have invested in a tool but still have poor data

## Industries

- Track record in Financial Services
- Now expanding into other sectors

## Businesses

- Multinational investment bank
- High Street retail bank
- Chic fashion-house
- Tiny social enterprise
- National charity

## Typically engaged by

- CDO/CDAO
- Head of Data
- Head of IT

## Engagements

- Long term, fruitful client relationships
- High repeat business and referrals



# Our services

We tackle all sorts of data challenges, always with business value in mind

## Diagnose & Measure

Quantifying Data Management capabilities

## Train & Sustain

Coaching and guiding teams

## Focus & Accelerate

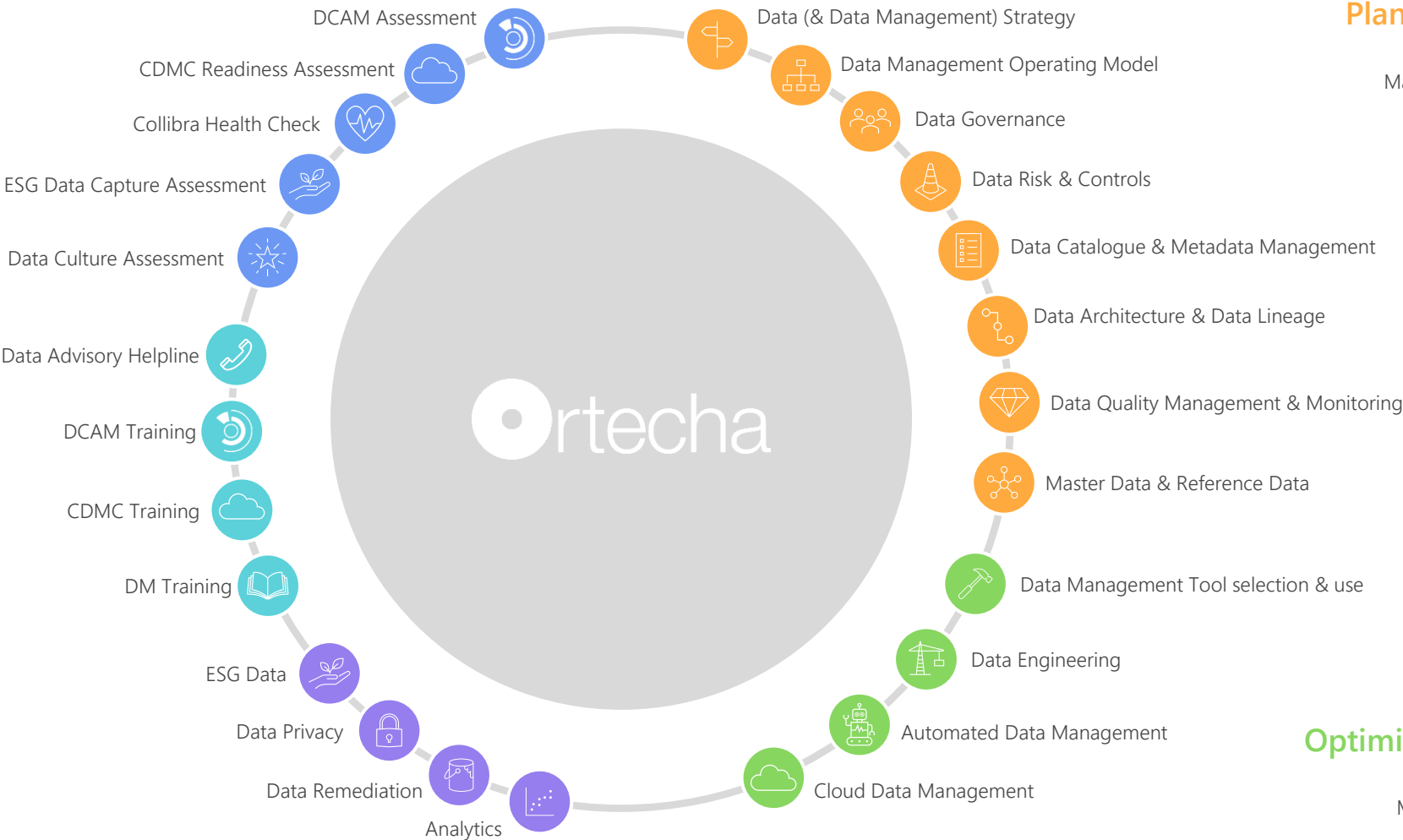
Resolving a specific business data problem

## Plan & Implement

Building new Data Management capabilities

## Optimise & Automate

Improving existing Data Management capabilities





# Contact us

We'd be delighted to tell you more



**Pete Youngs**

Managing Partner

London, UK

[pete.youngs@ortecha.com](mailto:pete.youngs@ortecha.com)



**Mark McQueen**

Managing Partner (US)

Nashville, Tennessee, USA

[mark.mcqueen@ortecha.com](mailto:mark.mcqueen@ortecha.com)



**James Probst**

Global Head of Business Development

Charlotte, North Carolina, USA

[james.probst@ortecha.com](mailto:james.probst@ortecha.com)





the Data & Analytics enablers

[www.ortecha.com](http://www.ortecha.com)